



Ventura Metro  
Blackburn Rd

Route  
703



SmartBus

G230

PROVIDE / GALLERY  
MUSEUM

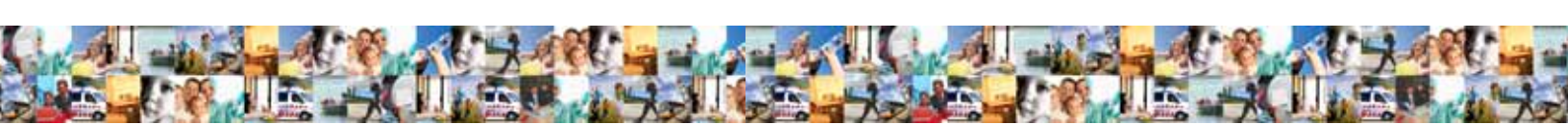
230

GRENDA'S

LOW FLOOR

6116 AD

EMERGENCY  
EXIT



# CHAPTER 11: Transport

*“The way we travel is directly connected to the quality of our lives and the productivity of our industries. That’s why we have a comprehensive transport plan that is about making our State more sustainable, more liveable and more productive.”*

JOHN BRUMBY, PREMIER OF VICTORIA

Labor believes that Victorians want to be well connected to one another. We want to be able to get where we need to go quickly, efficiently, and safely. Families and friends who live some distance away from each other need to be able to come together – this is vital to building a strong community. And of course our economy depends on businesses being able to move product and supplies around our State in a timely and efficient way. Also, as we respond to climate change, it is vital that we make our transport system sustainable and low impact.

That’s why Labor is working to make our transport system sustainable, safe, and accessible.

Labor will implement its bold 10-year *Victorian Transport Plan*. We will provide more trains and trams, more tracks and stations, better and safer roads, and more transport choices for Victorians living in the suburbs and regions. We will also work towards an expanded and better integrated bus system, and improve the safety and efficiency of our taxi services.

Labor recognises the critical role that extending rail links and upgrading outer metropolitan arterial roads play in the development of our growing suburbs and will invest in building these vital transport corridors to ensure the liveability of these emerging and vibrant communities.

Labor believes in equal access to services for all Victorians, and that’s why we will improve disability services on public transport, and make sure tickets remain affordable for all Victorians. We will also work to improve transport in our regional communities; to connect them both with each other and with the big cities.

Labor believes that safety must be our number one priority when designing our future transport system: safety on our trains, trams and buses, and safe driving on our roads. We have come a long way in reducing the road toll, but one death on our roads is still one too many.

As Victorians respond to climate change, a sustainable, efficient transport system will be essential. Labor will take a holistic approach to meeting our transport needs for the future.

## **INTEGRATING TRANSPORT & PLANNING**

### **11.1 Labor is committed to planning for sustainability and affordability; maintaining the qualities that make Victoria one of the most liveable places and sharing the economic benefits of growth across the State.**

Labor will take an integrated, long term approach to land use and transport planning, ensuring infrastructure and essential services will be ready as communities grow.

Labor will adopt a consistent approach to planning and mobility to ensure:

- Strategic urban amenity and mobility decisions creating more liveable and sustainable communities;
- Priority for more sustainable and efficient transport modes, and



- Urban amenity and mobility goals are met in all green-field and infill developments.

Labor will expand and upgrade Victoria's transport system, including train, tram and bus services, consistent with the *Victorian Transport Plan*, the *Melbourne@ 5 million* goals, and the *Blueprint for Regional Growth*.

It will work towards its long term goal of increasing the proportion of trips in Melbourne made by public transport to 20% by 2020, increasing use of rural public transport and will commence planning now to further increase the proportion of trips made by public transport in Melbourne beyond 2020.

## **BUILDING A BETTER TRANSPORT SYSTEM**

### **11.2 Labor will implement the *Victorian Transport Plan* to further transform our transport system to accommodate Victoria's growth.**

Labor will give priority to delivering improvements to the key upgrades identified in the Victorian Transport Plan to meet recent unprecedented growth in demand for services, delivering:

- More trains, trams and buses;
- More train tracks, better maintenance and improved stations;
- Better roads that are less clogged, and
- More transport choice in our suburbs and regions.

This will be achieved by expanding and upgrading specific train, bus and tram routes across the metropolitan area and country Victoria including, amongst others:

- The Melbourne Metro, a new rail tunnel between Footscray and Caulfield stations;
- The regional rail link from Tarneit to Southern Cross station;
- The rail extension from Epping to South Morang and electrifying the line to Sunbury, and
- Expanding and upgrading SmartBus services.

Labor will ensure that further investment is made in vital maintenance of rolling stock and infrastructure to improve punctuality and reliability.

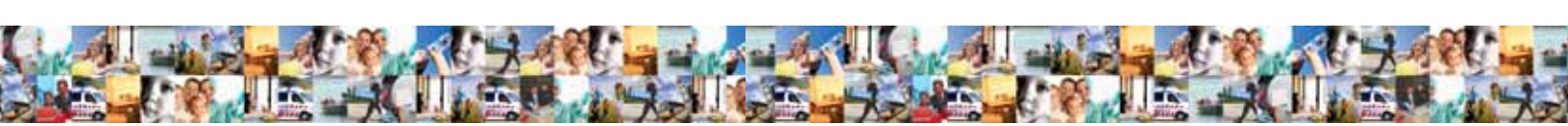
The new MYKI ticketing system will be used to make travel simpler and more convenient, opening up the potential of the smart card system to provide commuter benefits.

## **PERSONAL SECURITY ON PUBLIC TRANSPORT**

### **11.3 Labor will to further improve security on Victoria's public transport system by increasing the numbers of transit police and authorised officers so that passengers can feel safe and secure when using public transport at all times of the day and night.**

Labor will:

- Increase the number of officers (transit police and authorised officers) with appropriate powers in safety and security related activities and strengthen the links between them;
- Act to help overcome concerns about personal safety and thereby encourage greater use of public transport;



- Expand and improve integrated CCTV systems ensuring standardisation, digital upgrading, storage, and fully coordinated use by police;
- Review selection procedures, educational programs and promotional opportunities to increase the number of women staff throughout the public transport system, including security staff, ticket inspectors, platform staff and train drivers;
- Ensure the deployment of Transit Police and Authorised Officers is responsive to criminal activities;
- Improve lighting at stations and station car parks and encourage greater activity around railway stations, and
- Progressively re-staff stations based on safety and patronage.

## **PUBLIC TRANSPORT SAFETY**

### **11.4 Labor will invest in level crossing safety and other improvements to make for a safer transport system for road users, pedestrians and public transport users.**

Labor will:

- Complete an annual level crossing upgrade program, with a priority based on a risk assessment;
- Reinforce the safety messages with public awareness campaigns, and
- Move forward with a rolling program of grade separation in key locations.

## **REGULATING TRANSPORT NETWORKS**

### **11.5 Labor will use its powers over planning, monitoring and regulation of transport services to further improve Victoria's transport networks.**

Labor's goal will be to provide the best possible service and access for both city and country Victoria, providing services for the whole community - including people with disabilities.

Labor will ensure the public transport system is run in the best interests of the public and will seek to improve services through the use of its powers over:

- Fare and ticketing policy;
- Timetabling of trains, co-ordination of transport modes and performance monitoring;
- Safety and service standards and delivery of community service obligations, and
- Maintenance of infrastructure investment.

Labor will work closely with local government to identify and address the needs of those communities and regions not adequately served by public transport.

## **ACCOUNTABLE SERVICE DELIVERY**

### **11.6 Labor will ensure full public consultation in the delivery of public transport services and will provide accountability through the Public Transport Ombudsman Scheme**

Labor believes communities should have an active role in the provision of new and improved transport services and will have clear processes in place to enable this. Consultation on major proposals can be achieved within reasonable timeframes without delaying a project needlessly



The private operators of services and their staff need to be held accountable. The independent Public Transport Ombudsman scheme provides an easy route for members of the to make complaints about services.

## **AN INTEGRATED BUS NETWORK**

### **11.7 Labor is committed to developing a comprehensive, integrated bus network as a crucial element of the transport system.**

Labor recognises that bus services are ideally placed to flexibly cater for the needs of a changing population, especially in Melbourne's outer suburbs and in regional communities.

Labor has delivered the biggest expansion of Victoria's bus network in 30 years, with a major focus on regional Victoria and Melbourne's growth corridors.

Labor will ensure bus service improvements are targeted to community needs by:

- Increasing frequency and spread of services (including night and weekend services);
- Better co-ordinating and integrating bus services with trains and trams and improve feeder services to other modes of transport;
- Ensuring appropriate planning including road layout in new estates so that bus services are able to run within easy walking distance of where all residents live;
- The development of strategic bus rapid transit services (train like bus services) such as Smartbus, the Doncaster bus services and route 401, using bus priority measures and technology, to link both activity nodes and existing arterial tram and rail services, and
- Following best-practice European standards for the use of clean diesel fuel in buses while investigating the use of alternative fuels.

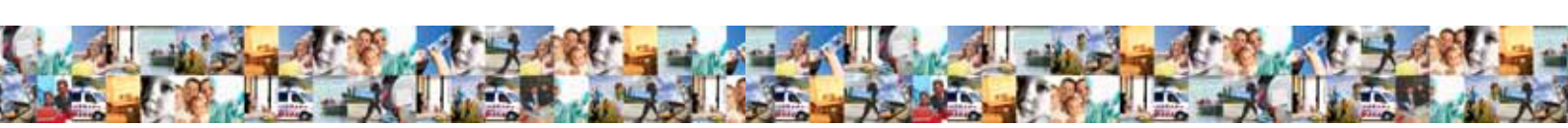
## **TRANSPORT INTERCHANGES**

### **11.8 Labor will upgrade railway stations, develop major interchanges and provide more secure car parking at appropriate railway stations.**

Labor is committed to making public transport facilities safer and providing better facilities to encourage more people to use public transport.

Labor will:

- Introduce more Park and Ride at strategic locations across the network;
- Deliver improvements to railway stations aimed at increasing comfort, safety and facilities at stations;
- Plan for the development of activity nodes at railway stations on a case-by-case basis;
- Support Southern Cross Station as the flagship of the new rail network - a world-class terminal for all regional rail services, fully integrated with regional buses, suburban trains, trams and buses, as well as taxi and airport connections;
- Support the "Stations as Modal interchanges" projects at Frankston, Broadmeadows and other key locations, and
- Improve the connectivity of bus/tram/ and rail services at all transport interchanges.



## **YOUNG PEOPLE & PUBLIC TRANSPORT**

### **11.9 Labor recognises that young people are amongst the greatest users of public transport in Victoria and will increase its focus on ensuring that we have affordable public transport services for students, children and young people.**

Labor will

- Retain the student concession card application fee indexed at the current level;
- Ensure young people's participation in all levels of decision making with regard to public transport in Victoria;
- Promote greater access by young people to public transport fines appeal processes, in consultation with the Youth Unit of the Ombudsman's Office;
- Investigate the creation of a youth liaison officer for Authorised Officers with the aim of reducing the number of young people entering the court system.

## **ACCESS FOR PEOPLE WITH DISABILITIES**

### **11.10 Labor will improve disabled access to public transport by requiring all new tender specifications for capital equipment to meet Commonwealth legislative requirements for disabled access.**

The acquisition of low-floor buses and trams, the construction of platform tram 'super stops' and improvements to railway stations are key elements of Labor's plan to improve the accessibility of the public transport system.

Labor will also strengthen the powers of the Taxi Directorate to enforce the requirements of the multi purpose taxis licences to ensure they meet the needs of people with disabilities.

## **LOCAL TRANSPORT LINKS**

### **11.11 Labor will work with local councils and transport providers to develop better local transport links to help all Victorians connect to work, schools, training, health care, recreation, entertainment, friends and families.**

Labor will:

- Work with local communities to identify transport gaps and develop local solutions to transport needs, and
- Integrate community transport into state-wide service planning, including health, disability and HACC services.

## **TAXIS**

### **11.12 Labor believes taxis are a critical component of an effective public transport services and will increase supply, regulate pricing and manage the industry in the best interests of passengers while protecting the rights and livelihood of drivers.**

Labor will:

- Ensure the effective integration of taxi services with other modes of public transport;
- Make our taxi system safer for the travelling public and taxi drivers;



- In consultation with stakeholders, work to achieve higher quality services and a more successful taxi industry, and
- Explore ways to appropriately reward the hard work of taxi drivers by ensuring drivers and operators get a reasonable share of fare revenue.

## **RURAL PROOFING TRANSPORT**

### **TRANSPORT – REGIONAL VICTORIA'S LIFELINE**

#### **11.13 Labor recognises that limited transport options in small communities is a major limitation for people in these areas and will focus on coordination of services, increased frequency and the adoption of innovative approaches to meet local transport needs.**

As well as overcoming geographic isolation, the provision of effective transport services gives rural and regional communities improved access to economic, education and employment opportunities.

To achieve this Labor will:

- Ensure transport services are planned with local communities to match their priorities and needs for movement of both people and freight;
- Increase community involvement in the planning and delivery of regional transport services, including timetabling, fares and other important consumer issues, and
- Adopt new alternatives, such as the *Transport Connections* program, making better use of local resources, such as community buses.

## **REGIONAL PASSENGER SERVICES**

#### **11.14 Labor will invest in regional passenger rail and not close services.**

Labor's investment in the regional rail network has been an enormous success – regional Victorians have voted with their feet, with unprecedented patronage growth since the completion of Labor's regional rail upgrade.

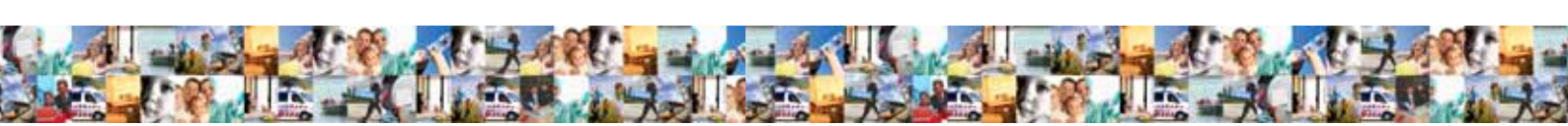
Labor will:

- Improve services and expand the capacity of the system;
- Invest in train station upgrades and extra staff to support growth where possible, and
- Support passenger rail with improved bus services

## **SAFER DRIVING**

#### **11.15 Labor will work with the community to achieve higher levels of safety on Victorian roads by developing fresh strategies to further reduce the toll of death and injury on Victorian roads.**

Labor recognises that any death on our roads is one too many. Using the Safe System approach, we will invest in safer roads, safer cars and safer drivers to reduce the incidence and severity of road crashes.



Labor will:

- Implement the *Arrive Alive* 2008-2017 strategy that aims to further reduce the road toll by 30% by 2017;
- Target specific anti-social behaviour, such as repeat drink driving and speeding offenders, hoons on country roads and heavy vehicle drivers and operators who fail to comply with safety standards and speed limits;
- Expand roadside drug testing and use the results to develop effective strategies to combat 'drug driving';
- Invest in fixing accident black spots and the development of safer road environments to reduce the toll from single vehicle crashes when cars run off the road;
- Push for new vehicles to be built with more safety features by supporting the Australian New Car Assessment Program which determines the crash performance of vehicles;
- Encourage private motorists and fleet operators to consider safety when purchasing cars and press for accelerated uptake of technologies such as ESC and side airbags, and
- Improve the safety of motorcycle riders, both on and off the road, and work with the Victorian Motorcycle Advisory Group to develop specific motorcycle crash strategies.

## **AN INTEGRATED APPROACH TO ROADS & PLANNING**

### **11.16 Labor supports an integrated approach to transport planning where public transport and road infrastructure play a shared role in connecting Victorian communities and economies.**

Recognising that 87% of public transport vehicle kilometres are provided by buses and trams which require roads to operate, Labor is committed to sharing road use appropriately between public transport, cyclists and private motorists.

A safe, reliable and effective arterial road system is essential for Victoria. A long term plan for road construction will ensure effective integration of Victoria's road network with other transport and land use priorities.

## **ROADS IN THE OUTER SUBURBS**

### **11.17 Labor supports an integrated approach to transport planning where public transport and road infrastructure play a shared role in connecting Victorian communities and economies.**

Recognising that 87% of public transport vehicle kilometres are provided by buses and trams which require roads to operate, Labor is committed to sharing road use appropriately between public transport, cyclists and private motorists.

A safe, reliable and effective arterial road system is essential for Victoria. A long term plan for road construction will ensure effective integration of Victoria's road network with other transport and land use priorities.

Labor will:

- Invest in building these vital transport corridors to ensure the liveability of these emerging and vibrant communities;
- Consider public transport options in outer arterial improvements, and



- Prioritise investment on the basis of safety, amenity, congestion and community need.

## **FREEWAYS**

### **11.18 Labor will ensure the construction; upgrading or extension of freeways meets strict social, economic and environmental standards.**

Labor will:

- When considering new freeway proposals, undertake a full examination of the likely safety, social, economic and environmental impacts, and alternative approaches to road and traffic management;
- Ensure that public transport, bicycle and pedestrian networks and facilities will be included as a part of freeway proposals, and
- Ensure that prior to deciding to build a new freeway, consideration is given to how existing infrastructure can be used to its full capacity through innovative approaches to road and traffic management.

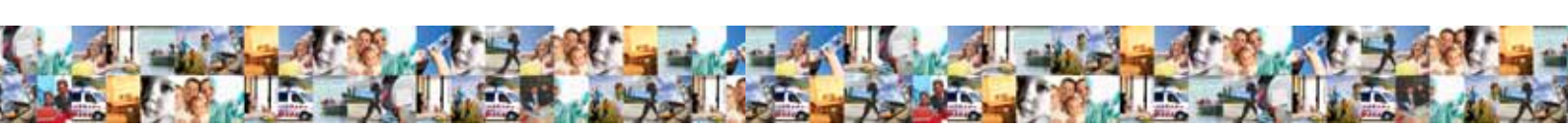
## **STATE & COMMONWEALTH TRANSPORT FUNDING**

### **11.19 Labor will pursue a range of funding options to implement road improvements and argue for Victoria to get its fair share of national infrastructure funds for transport, including the right balance of urban and regional public transport, rail freight and roads**

Victoria can no longer build our way out of congestion. The need for a quantum leap in funding for public transport – such as the Victorian Transport Plan - is pressing. There is an urgent need to invest in urban transport networks to improve both community amenity and efficiency for commercial vehicles.

Labor will:

- Seek a better balance of Commonwealth funding between the different transport modes based on sustainable transport principles;
- Campaign for a fair share of Commonwealth fuel taxes to be returned to Victoria and a sizeable proportion of these funds to be directed to public transport;
- Advocate the reform of Fringe Benefit Tax and GST rules to benefit public transport users and operators.
- Allocate the *Better Roads Fund* transparently and ensure that at least one third is used for outer suburban roads and one third for country roads, and
- Ensure that new road network infrastructure will be open to public or private provision on the basis of best value for the community and early delivery of projects.



## TOLLS

### **11.20 Labor will not toll existing roads and only accept the use of tolls to fund new roads in narrowly defined situations that avoid the problems experienced elsewhere.**

A toll road proposal must meet three key criteria:

- A new project could not proceed without a toll to fund it;
- The project does not require the closure of other roads or restrictive measures to force people to use the toll road, and
- There are no restrictive clauses in the project development contract that would restrict future Governments building public transport or roads.

## VICTORIA'S AIRPORTS

### **11.21 Labor will implement a long term strategic approach to aviation to get the greatest benefit from Victoria's strong network of airports and strengthen our links with the rest of the world.**

Melbourne International Airport is a major hub in the national and international aviation network, providing critical links to the world for Victorian exports and our tourism industry. It is also an important source of skilled employment through aviation and airline services, maintenance services, training and value added manufacturing, supported by a network of regional and general aviation airports.

Labor will:

- Ensure urban growth does not encroach into flight paths at any airport;
- Monitor pricing and service quality at airports that have been leased by the Commonwealth Government to ensure the operators upgrade facilities and meet strict environmental and safety standards;
- Support the development of air freight through upgraded facilities and better integrate air freight services with road, rail and maritime services;
- Advocate for greater safety facilities and better traffic control arrangements at Moorabbin airport;
- Develop Point Cook as a significant light aviation and flight training centre, subject to continuation of noise abatement considerations;
- Provide upgraded facilities for regional services and support the local ownership of regional and rural airports in Victoria, and
- Review surface transport access to Melbourne Airport with a view to enhancing greater use of public transport and reducing car dependency for airport customers and workers specifically and for northern suburban residents and businesses generally.

## MANAGING THE FREIGHT TASK

### **11.22 Labor recognises the crucial role both road and rail freight plays in the Victorian economy. Labor will increase the use of rail freight, while also increasing the efficiency of road freight and reducing the number of trucks on local roads.**

*Freight Futures* provides a blueprint for a properly planned freight network. Using this



framework, Labor will:

- Improve rail access to the docks;
- Build a network of inter-modal hubs at key locations in the outer suburbs and regional centres connected by a Principle Freight Network, and
- Deliver more efficient methods of road freight movement, including increased use of Higher Productivity Freight Vehicles on selected major arterial freight routes, beginning with trials in metropolitan Melbourne and the Green Triangle region.

Labor recognition of the vital role of trucks in freight, particularly for the final kilometre of delivery.

Labor will:

- Work with unions and industry to facilitate better safety and health outcomes for drivers and to address skill shortages across the freight and logistics industry;
- Develop a freight workforce strategy, and
- Support mature aged workers as they transition into retirement.

## **COMPETITIVE RAIL ACCESS**

### **11.23 Labor remains committed to an open access regime on the rail freight network to encourage lower prices and innovative rail services for customers.**

Labor will encourage competition in providing rail freight to benefit Victoria's farmers and exporters.

## **VICTORIAN PORTS**

### **11.24 Labor will facilitate development of Victorian ports through Port Futures, a strategic vision for future land and transport developments at our major ports.**

Labor recognises that our international trading ports in Melbourne, Hastings, Geelong and Portland are the lifeblood of Victoria's economy. The effective operation of our ports is critical to our exporters, farmers and manufacturers.

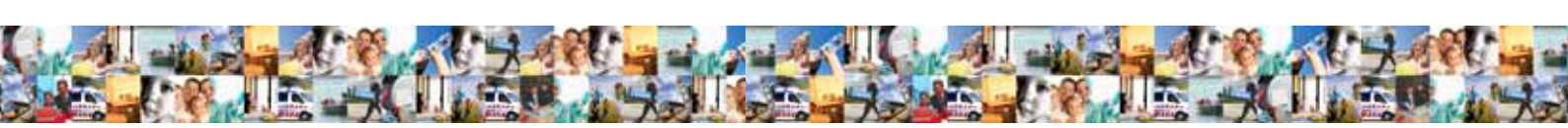
Labor will:

- Encourage the Commonwealth Government to support our domestic shipping industry, and encourage Australian industry to invest in coastal shipping;
- Ensure planning for ports balances community and environmental needs with economic stability, and
- Work towards increasing container handling capacity at the Port of Melbourne and the long term development of Hastings.

## **SAFETY, PRODUCTIVITY & THE ENVIRONMENT AT OUR PORTS**

### **11.25 Labor will work constructively with waterfront users, stevedoring companies, unions and port authorities to improve port productivity and safety.**

Labor will improve the competitive position of Victorian producers, manufacturers, importers and exporters by encouraging all Victorian port operations to maintain world class productivity standards while being leaders in safety and environmental standards.



## STREAMLINING TRANSPORT PROJECTS

**11.26 Labor is committed to ensuring that transport projects are delivered efficiently and as quickly as can be accommodated, while maintaining an appropriate level of community consultation.**

Labor will consider ways to improve the delivery of transport projects for the community.

## RURAL PROOFING ROADS POLICY

### IMPROVING REGIONAL ROAD LINKS

**11.27 Labor recognises that the growth and prosperity of regional Victoria depends on meeting the crucial freight task and maintaining liveability of regional centres and towns through good connections to services, jobs and communities.**

Labor will continue to support local councils in meeting their responsibilities for local roads through the local timber roads program, the state impacted local roads program, and the regional infrastructure development fund.

Labor will:

- Target regional roads for safety and amenity improvements and for economic growth;
- Assist with upgrading local roads critical to economic development of an area, and
- Press the Commonwealth Government to adequately fund local councils for local roads.

## CLIMATE ACTION THROUGH TRANSPORT CYCLING LINKS

**11.28 Labor will work in conjunction with local government to build on the strategic directions in the Victorian Cycling Strategy to extend Victoria's on-road and off-road bicycle network.**

Labor will:

- Promote and encourage a culture of cycling;
- Reduce conflicts and risks for cyclists;
- Integrate cycling with public transport, and
- Integrate cycling needs with land use planning, transport and the built environment

## WALKING & PEDESTRIAN FACILITIES

**11.29 Labor will provide safe and good quality footpaths, walking tracks, roadside strips and pedestrian facilities on state roads as an integral part of its land use and transport policies.**

Labor will:

- Develop a walking strategy to prioritise pedestrians in infrastructure planning and construction, create safe walking environments, better represent pedestrian interests across government and encourage walking in the community;
- Encourage councils to provide safe and good quality footpaths;
- Ensure that proper consideration is given to walking in the design of all new road and



public transport projects, and

- Support the development of more rail - trails, pathways and walking tracks in regional Victoria to promote sustainable development, healthy lifestyles and to generate economic, social and recreational activity in regional towns.

